

KaVo ESTETICA® E70

Experience a whole
new dimension in
treatment comfort.



KaVo. Dental Excellence.

Practical comfort has a name – KaVo ESTETICA® E70.

Usefully clever. The ergonomic approach.

In principle, quite simple. With the new ESTETICA generation, we take comfort and ergonomics to a whole new level for you. With intelligent, individualised and efficient components and functions that make life easier for you as a dentist.

The new ESTETICA generation is based on the revolutionary suspended chair approach. This unique approach enables a surprising degree of legroom for both you and your dental team.

Comfort for every day and for your future.

So that everything is just the way you want it, we individually customise your KaVo ESTETICA E70 for you. In every case, you will receive our newly developed, intuitive operating system. Why? To make everything crystal clear during treatment and save you time and stress. With regards to time: The automated hygiene functions free up a surprising amount of time for you and your assistant – after all, you have more important things to do.

Is there something else you would like? No problem. If there is anything you would like to add, it can be retrofitted. We are planning for your future today.



Do you also feel that comfort is essential?
Then you need an intelligent treatment
system.

Practical comfort just makes sense.

The reason for the intuitive control logic of your KaVo ESTETICA E70. This spares you the inconvenience of long training periods and accidental misuse during operation. Instead, you can quickly and confidently access all relevant functions. Everything is self-explanatory.

Your legroom is a function of the chair design.

Our design engineers invested a great deal of time and effort in developing an approach that would completely free up the area under the patient's chair of your KaVo ESTETICA E70. The result: A surprising new level of leg comfort. Uncomfortable postures are a thing of the past – you and your assistant can now adopt optimum working positions. Since you and your team feel better with optimised ergonomics, all work becomes that much easier.

True aptitude includes versatility.

On the following pages, read how the dentist and assistant elements, the suspended chair approach and the foot-operated control all translate into practical comfort for your work environment.



Find everything easily. And like what you find.

Self-explanatory intuitive control logic.

Good news for you: Your control unit has all the functions ready for use when and where you need them. Directly and comfortably access all important functions and save valuable time. Tell your dentist element what you want, and it will take note. You can specify and flexibly retrieve the motor speed and torque for specific indications. The KaVo ESTETICA E70 just became easier to handle – for every clinical procedure.

Increased freedom, increased comfort.

Whether the table or cart delivery version: There are practically no limits to the instrument specification of your dentist unit. Your instrument holder has immediate space for five or optionally six instruments, including the intra-oral camera and remarkably, the table element width remains unchanged. The advantage: Future changes are easily accommodated. Whatever you decide today, you can change tomorrow, thanks to the uniform table size. If you wish, you can also have a USB interface. Each USB interface enables you to accommodate needs by the seamless integration of additional components at any time in the future. Your dentist element may be easily and precisely moved in every direction, just like your service table.

Only KaVo offers you this option: Choose either 5 or 6 instrument holders and change this selection if you change your mind at a later date. It's that easy.

Endodontics? But of course.

An integrated endodontics package additionally optimises your ergonomic procedures. Optionally installed in your KaVo ESTETICA E70 if you so desire. This noticeably shortens paths for a smoother workflow. In addition, you no longer have to procure additional equipment for endodontic tasks.

Dentist unit and equipment – main features and advantages for you:

1. Easy and logical to use
2. Modular, configurable and expandable
3. KL-702 micromotor with endodontic torque control
4. ERGOcam 4 intraoral camera
5. Adjustable service table with holder for two standard trays
6. Pneumatic brake with sensor (optional)
7. USB interface (optional)

Your posture affects your health.

Your healthy posture is key.

Feel free! The resulting freedom of movement is provided to you by the innovative suspended chair design of the KaVo ESTETICA E70. There is nothing but air below the patient's chair. You and your assistant are therefore both able to adopt the most comfortable and/or efficient working position for each stage of the patient's treatment protocol. Your procedures become smoother and much more ergonomic. Pure comfort for you, day in and day out.

Treat your patients from a standing or sitting position.

Would you like more freedom? No problem. Your KaVo ESTETICA E70 adjusts to your body size and your desired posture. You can vary the chair height from 350 mm to 900 mm. At its highest position, you can treat supine patients while standing, even when you are over 1.80 m tall. At its lowest position, you can assume a natural, seated posture while treating supine patients. Adjust the chair height to practice dentistry the way you want.

The lowest working position of 350 mm also allows a natural body posture when treating seated patients.

The suspended chair – Main features and advantages for you:

1. Suspended chair for optimum leg room
2. Infinitely variable chair positions from 350 mm to 900 mm for comfortable working while sitting or standing
3. Noise-optimised chair drives with soft start and soft stop
4. Trendelenburg movement

The highest working position of 900 mm allows you to treat supine patients while standing – even dentists over 1.80 m tall.



An assistant for your assistant? Yes, please!

Motivate your employees.

Optimum work conditions for your assistants make your practice more productive. The assistant element of your KaVo ESTETICA E70 can also be adjusted to the specific needs of your employees, so they can support you efficiently and effectively. Everything important is arranged with ergonomic perfection.

Configure the assistant element according to the needs of your employees and practice. For example, integrate an intraoral camera, or an additional surgical suction system.

Assistant unit – Main features and advantages for you:

1. Easy to use with direct keys
2. Additional instruments may be fully integrated, such as the intraoral camera
3. USB interface (optional)
4. Maximum flexibility from the adjustable height and large, pivotable section

Tailored to your comfort from head to foot.

Gentle foot movements instead of a multitude of manual movements.

Your KaVo ESTETICA E70 responds to both hands and feet. By gently touching the switching surfaces of your multi-functional, KaVo foot-operated control, you can access every instrument and chair function as well as all multimedia functions for your KaVo ESTETICA E70. Use your foot to start all repetitive treatment processes. The foot control features a special valve for regulating the compressed air pressure of the turbine as well as the intensity of all other instruments. This helps you to gently and precisely control your handpieces.

If you don't want to have cables across the floor, you can select the special remote, foot-operated control system for the KaVo ESTETICA E70 instead of the cable version. Thus increasing your comfort even further.

No more muscle cramps.

With conventional units, to maintain a set instrument speed/intensity, the foot control has to be depressed by exerting a continuous, consistent muscular force, which then leads to discomfort, muscle fatigue and cramps. Not so with KaVo -- The type of muscular activity, which can cause fatigue over time, is avoided. Instead, the gentle, effortless right-left pivoting movement of your foot precisely controls the KaVo ESTETICA E70. Your leg muscles therefore remain relaxed even after long periods, irrespective of whether you are sitting or standing whilst working.

Foot-operated control – Main features and advantages for you:

1. Control chair, instrument and multimedia functions
2. No fatigue results from the left/right pivoting foot movement
3. Easy, precise speed control
4. Improved hygiene, especially the avoidance of cross-infection
5. Can be placed anywhere under the patient chair because of its design
6. Remote, foot-operated control (optional) with delay-free radio signal transmission for increased health & safety without cables

Hygiene is a natural result.

There is hardly a more important way of preventing cross-infection than avoiding contact. Your patient's chair and the instruments of your KaVo ESTETICA E70 are fully commanded by the foot control. You do not have to touch the dentist element during treatment, and can therefore effectively reduce cross-contamination within your dental practice. The radio-operated foot control has no cables that need to be cleaned, or over which one might trip.



*Easy to use with direct functions.
Always quickly accessible: Chair, hygiene and instrument functions.*



Substantially more comfortable than „accelerate and brake“ design: Speed can be precisely controlled with gentle right/left pivoting movements of your foot. There is no long-term tightening and cramping of the muscles.



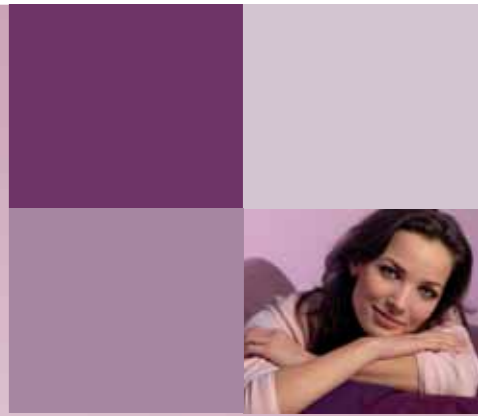
Do you have your own way of doing things?
Then you will enjoy your new freedom.

Individual comfort has many facets.

Just like you. It is therefore a good idea to keep all your options open. It's easy: Choose the features you want and your preferred colours to correspond with the treatments that you provide and your individual preferences. The various components are seamlessly integrated into your treatment unit. What if you decide to change your mind at a later date or want to specialise in different disciplines? No problem. You can easily and comfortably retrofit and update at any time.

Personality is expressed in a variety of ways.

In the following pages, read how new colours and functions can enhance your routine and how your KaVo ESTETICA E70 can be comfortably customised to you and your patient's needs.



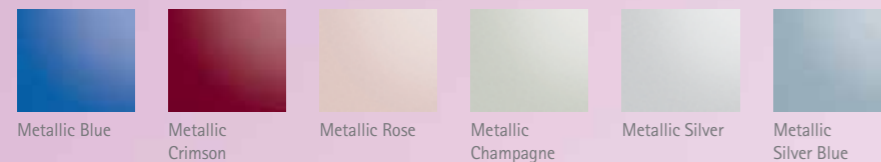
There is no disputing taste – especially not your own.

Individually adapt the design to your practice.

Do you have classical tastes, or do you want to set accents with your own colour combinations? Both are possible. Your KaVo ESTETICA E70 is as individual as yourself. With the timelessly modern design and the numerous varieties of colour and upholstery, practically every wish can be met, and the treatment unit can be precisely adapted to the environment of your practice. Your personal colour selection provides an individual ambience. Anyone who enters your operating rooms will feel at home.

Modern, happy, warm, sprightly, cool, minimalist, individual –select your personal ESTETICA E70 from over 100 possible combinations.

Metallic paint colours



Solid colours



Upholstery colour

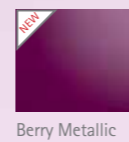


Colour and design – Main features and advantages for you:

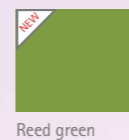
1. A wide selection of different paint and upholstery colours
2. Individual colour combinations are possible
3. Timelessly modern design, high-quality materials

NEW!
The KaVo colours for 2009!

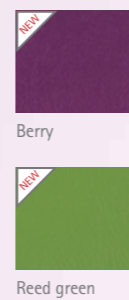
Metallic colours 2009



Solid colours 2009



Upholstery colours 2009



Evolution is a question of adaptation – and equipment.

The dentist and assistant elements are highly flexible.

You know precisely what you want? There is practically no limit to the instrumentation for the dentist and assistant elements. Equip yourself and your employees to best conform to your style of work. The KaVo ESTETICA E70 adjusts to your personal requirements and those of your team, and is open for future instruments and expansion.

Always ready for the future.

Independent of your specialty or whether you want to avail yourself of the entire spectrum, your ESTETICA E70 is completely adaptable to you and your wishes: Endodontics, high-frequency surgery, saline solution pump, MULTiflex and INTRAmatic coupling, X-ray viewer, multifunction syringe and much more. As universal interfaces, the coupling systems of your dentist element are multi-talented. The newest interface to enable your treatment unit to both keep pace with the present and remain prepared for the future: The COMFORT-base for your COMFORTdrive. No other system can be expanded this easily.

Individualised features – main features and advantages for you:

1. Flexible features for the dentist and assistant elements
2. Supports different specialities as needed
3. A wide selection of additional features, retrofitable in the future
4. Value-retaining, standardised interfaces for easy use and expansion



Suspended and lying down: Two different worlds.

The suspended chair provides comfort and safety.

Your patients can fully relax on your KaVo ESTETICA E70 with the automatic Trendelenburg positioning function. The footrest of the patient chair raises or lowers depending on the backrest angle. The elevated position supports your patient's circulatory system. In addition, overextension and compression are avoided when changing positions from maxilla to mandibular treatment – no „stretching effect.“ The patient's head remains in the same position on the headrest; you do not have to adjust the backrest or headrest.

Another ergonomic feature: Lengthwise adjustment of the backrest via the integrated spine length adjustment (only with the Comfort backrest). The articulated movement of the backrest simulates the pivot axis of the hips and therefore corresponds to human anatomy.

To prevent your patient from being startled during treatment, the noise level of the drives of your KaVo ESTETICA E70 has been reduced. Tension melts away; the atmosphere is anxiety free. Your patients will therefore be motivated to return.

Your patients should feel comfortable no matter who they are.

For optimum patient comfort, you can choose the Comfort backrest for the patient chair of your KaVo ESTETICA E70. This special backrest allows your patients to remain comfortable in a supine position even during long treatments. The large surface stabilises the patient's body and is even suitable for patients with rounded shoulders, or spinal curvature.

The Progress backrest is another attractive option. Your patients are thereby more relaxed, which is a substantial advantage especially when treating children. The particularly flat backrest surface gives you greater legroom.

Both backrests offer the following advantages: They are ergonomically designed for your patients – for young, old, large and small, independent of their body size.



Progress backrest: Correct working posture and optimum access for the dentist, especially when treating children. Comfortable position for persons over 1.90 m tall.



Comfort backrest: Maximum comfort and wide shoulder resting surface for patients. Good shoulder support for patients over 1.95 m tall.

Patient positioning – main features and advantages for you:

1. Two backrests with soft upholstery to choose from
2. Headrests: Motorised or manually adjustable
3. Left or right arm rest as desired
4. Spine length adjustment and backrest arc segment
5. Child seat and magnetic wedge attachment



Particularly comfortable: The articulated movement of the Comfort backrest simulates the natural pivot axis of the hips.

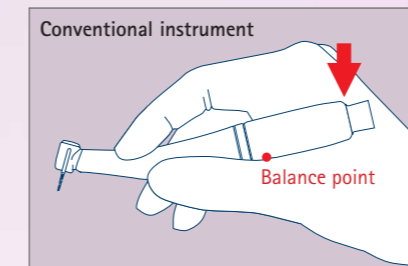
We make your work a little easier.

A genuine relief.

The ergonomics of your KaVo ESTETICA E70 are revealed in every detail. For example, the KaVo COMFORTdrive is the lightest and most compact, electrically operated dental instrument in the world. With the KaVo COMFORTdrive, we have succeeded in combining the advantages of turbines and speed-increasing "slow speed" instruments into a single instrument. With regard to comfort, weight and performance, the KaVo COMFORTdrive sets new standards. An extremely useful drive system that optimally balances performance and lightness. Every day you will enjoy a significantly easier, more efficient and relaxed approach.



The perfect balance for work without fatigue: The heavy section mesial to the balance point of the instrument of the KaVo COMFORTdrive has been substantially reduced. The finger pressure applied to counteract imbalance during work is noticeably less.



The lightest and easiest-to-use, electrically-operated dental instrument in the world: KaVo COMFORTdrive.

Ergonomic drive – Main features and advantages for you:

1. Integratable, sterilisable, collectorless, electric micromotor
 - Dynamic speed range: From 30,000 rpm to 200,000 rpm
 - Excellent 30 W output to maintain a constant speed under fluctuating load
 - Powerful 25,000 LUX output for superior visual acuity
 - Weight: only 74 g
 - 3-port spray for perfect cooling of the operation site
 - Completely sterilisable up to 138° C; thermodisinfected
 - Internally guided, separate cooling media



Wouldn't it be nice to have more time?
Then you need an efficient
treatment system.

**Comfort without efficiency is no
comfort at all.**

Your KaVo ESTETICA E70 promotes timesaving, efficient procedures. In our opinion, being rushed is a waste of time. Your treatment unit takes over tasks that can be productively automated for both you and your assistant. Such as hygiene. A genuine, measurable improvement for your practice.

Precision work cannot be rushed.

All the features of your KaVo ESTETICA E70 are completely integrated and optimally balanced -- every move and action is natural and easy. Work processes are ergonomically optimised; the workflow takes less time -- for a more relaxed approach. Efficiency is a natural by-product.

Quicker and more reliable.

On the following pages, read how you, your team and your patients can experience greater safety despite substantially quicker routine hygiene tasks. Also learn how you can profit from a smooth, efficient workflow and remain open to innovations in the future. With superior quality and comfort.



Performance with hygiene.



Safety through automated disinfection.

Safety is primary. The hygiene functions of your KaVo ESTETICA E70 prevent treatment errors, protect you, your staff and your patients, whilst increasing the reliability of your system. The automated "Hydroclean" function uses water to clean both the liquid waste and suction systems, which includes the suction hoses, and disinfects these with the fully automated dosing of DEKASEPTOL gel. Manual steps are no longer needed, and your personnel never come into physical contact with disinfectants.

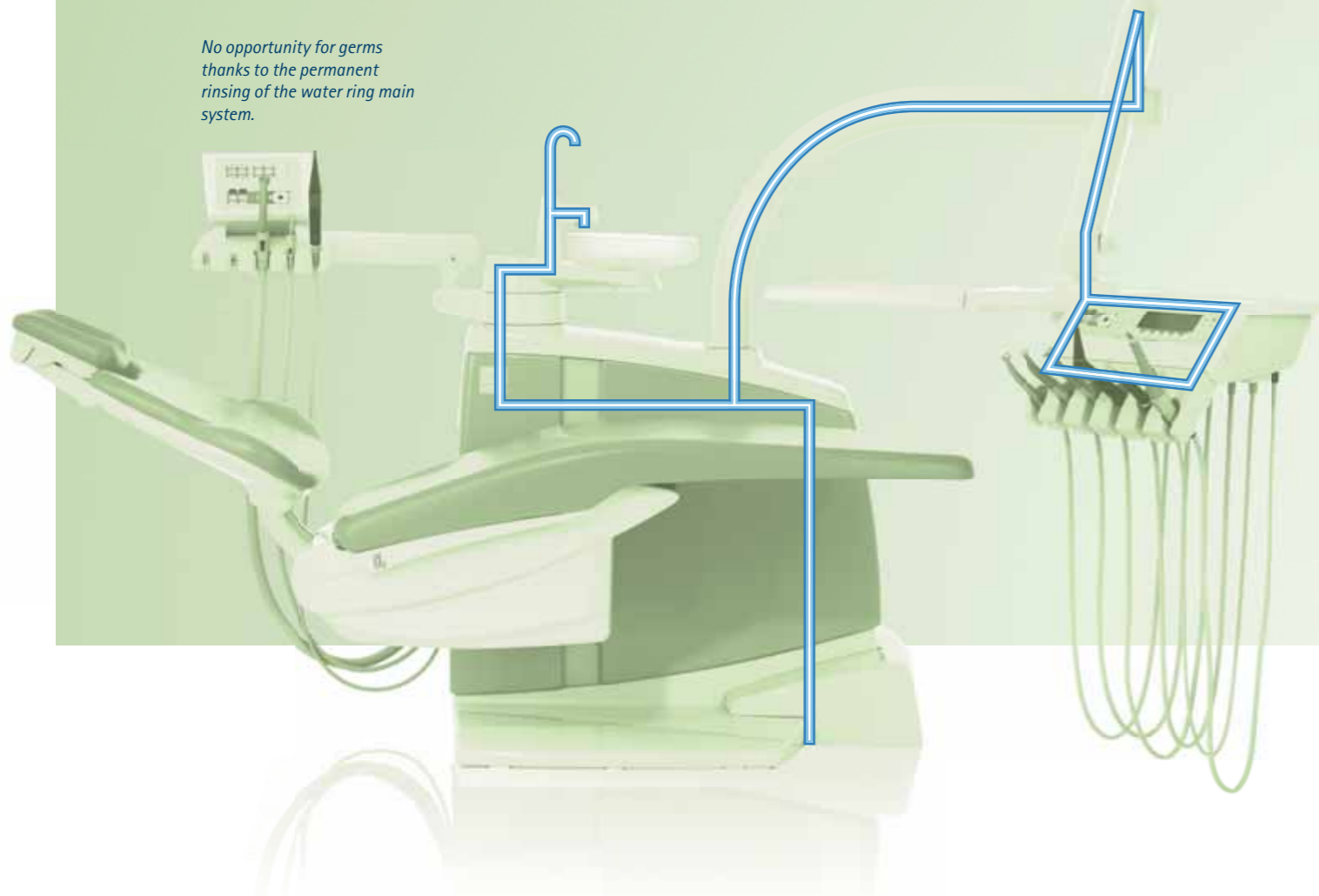
Save time with automated hygiene.

With the automated, permanent disinfection system of your KaVo ESTETICA E70, you avoid time-consuming hygiene tasks. OXYGENAL prevents microorganisms from spreading in your treatment system during normal operation. In addition, the intensive disinfection maintains the quality of the cooling spray and rinsing liquids, even during long downtimes. There are no blind ends in the entire plumbing system. The unit features a ring water main in the dentist unit, which permanently rinses the entire system and prevents the accumulation of pathogens, which can propagate into biofilms.



Oxymat und Dekamat, both integrated in the device, bring standardised and automated hygiene to your practice. This means less work for your assistant. Furthermore, automated care promotes operational reliability.

No opportunity for germs thanks to the permanent rinsing of the water ring main system.



Standard ancillary air channels around the cannula connection provide essential by-pass air (2006 Study - University of Dresden), even if the patient's soft tissues have been aspirated into and have occluded the cannula. The uninterrupted aspiration prevents contaminated fluids from flowing backwards, and therefore contamination through reflux is practically eliminated. This is achieved with all standard cannulas now available on the market.

Automatic rinsing programme in accordance with RKI.

Saving even more time. The automated rinsing program facilitates daily flushing of all water lines. Simply activate the variable rinse time by the push of a button.

Improved protection through anti-reflux system.

A small idea with a big impact. Anti-reflux technology in KaVo instruments and motors isolates and protects the water supply system. This in turn protects your patients and prevents contaminated spray coolant from being sucked back into the treatment unit.



Greater safety through removable parts.

KaVo has also given great thought to areas that your hands touch and that easily become contaminated: Frequently grasped parts such as handles, instrument holders and spittoon bowls are removable. They can be cleaned, disinfected and some even sterilised, depending upon circumstances.

Increased comfort through motorised pivoting spittoon.

Selection of the optional, motorised, rinsing position, automatically swivels the spittoon towards the patient before commencing the bowl flush function. This facilitates patient comfort during mouth rinsing. The bowl flush ceases and then the spittoon automatically swings back to its starting position, as soon as the patient is returned to any treatment position.

Important components, such as the porcelain spittoon bowl and tumbler filler coaster may be thermodisinfectied.

Time savings in hygiene – main features and advantages for you:

1. Automated and standardised hygiene
2. Simple and faster cleaning
3. Removeable parts
4. Increased health & safety through anti-reflux systems



The source of a perfect workflow.

Your dentist element accelerates procedures.

Since speed is frequently important during treatment, your dentist unit quickly supplies information and controls all important functions.

How can you remain aware of everything at this pace? Your dentist unit has all the answers you need. For example, patients can be quickly and comfortably positioned. Its (optional) sensor brake immediately deactivates when the grab handle is touched and re-activates when it is released. Its service table can also be swivelled. In just the way that is necessary.

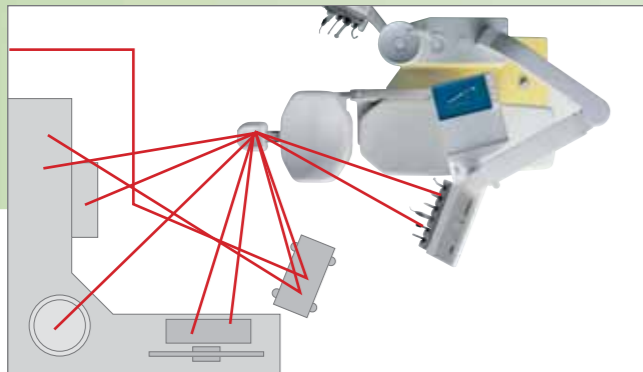
Short paths simplify work.



Where should I put the surgery light and X-ray machine? Where is the best place for ancillary devices? What is the best way to install the microscope, and where does the monitor belong? Only one answer is necessary: The Centro mounting system solves your individual requirements for space and logistics. From lightning to trays – the Centro holds your additional devices arranged according to your wishes. It further enhances ergonomics and gives you the freedom to concentrate on the essentials.

The optimised workflow measurably shortens your data paths during treatment. Capitalise on the timesavings from the integrated endodrives as you wish – fewer paths from integrated technology and optimised ergonomics.

Paths with a conventional treatment unit.



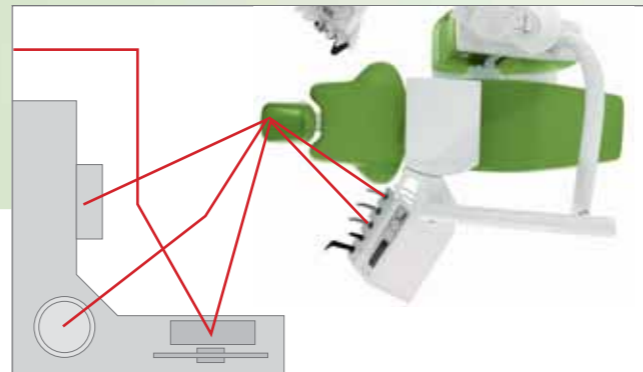
More efficiency for the entire team.

Teamwork is required in your practice. The assistant element can therefore be flexibly sited, pivoted, and adjusted in height and its control panel employs the same colour-coded buttons found on the dentist element. Since half the job is clear communication, the assistant element, dentist element and patient chair of your KaVo ESTETICA E70 are perfectly tailored to each other. There are no detours or interruptions.

Perfect workflow – Main features and advantages for you:

1. Complete integration of all components for endodontics, X-rays, etc.
2. Systems harmonised with each other
3. Comprehensive adjustment options for all components
4. Information systems to promote smooth, seamless procedures
5. Sensor brake in the dentist element (optional)
6. Balanced movements

Paths with the new KaVo ESTETICA E70.



Quality provides the superior edge.

Manufactured in Germany. You can count on it.

The KaVo ESTETICA E70 was tested in extended trials of longer-than-average duration. No problems arose, even in simulations of extremely heavy use. The ergonomic features were of course also subject to rigorous testing. The valuable assistance and input from experienced dentists during development, helped us refine and continuously optimise individual options for the unit, covering a diverse range of demands from basic to very advanced dentistry. With superior results; tested and certified according to exacting German and international standards.

Outstanding quality – main features and advantages for you:

1. Solid construction with superior materials
2. Precise processing according to superior standards of quality
3. Fine harmonisation and gradations for all functions
4. Maximum reliability from comprehensive long-term trials

We offer you maximum comfort and more.

With your KaVo ESTETICA E70, you experience both superior comfort and functions. In every detail, and in the overall interaction of the components. We understand that you require fine-tuning and sensitive gradations for your work. Superior manufacturing is required to achieve a treatment unit that enables superior quality and comfort when working. Your KaVo ESTETICA E70 offers the highest standards of quality.



High-quality surfaces and materials manufactured with proven KaVo quality.

Your wish, your satisfaction

	ESTETICA E70 T	ESTETICA E70 C		ESTETICA E70 T	ESTETICA E70 C
Patient chair			Assistant unit		
Soft upholstery	●	●	Spray mist suction	●	●
Child's seat	○	○	Saliva ejector	●	●
Backrest			Second saliva ejector	○	○
Comfort	x	x	Triple-function syringe handpiece	○	○
Progress	x	x	or multifunction syringe handpiece	○	○
Headrest			LED polymerisation handpiece	○	○
Double-jointed, mechanical	x	x	Hydrocolloid connection	○	○
Double-jointed, pneumatic	x	x	ERGOcam 4	○	○
SOMATIC with electric motor	x	x	USB interface	○	○
Magnetic wedge attachment	○	○	Support for tray holder	○	○
Arm rest			Height-adjustable arm	●	●
Right	○	○	DIAGNOdent holder	○	○
Left	○	○	Device body		
Dentist unit			Glass spittoon	x	x
1st Turbine hose	●	●	Porcelain spittoon	x	x
2nd-5th Turbine hose	○	○	Motorised spittoon	○	○
1. KL-motor 702	●	●	Permanent disinfection	●	●
2.-5. KL-motor 702	○	○	Intensive disinfection	●	●
Triple-function syringe handpiece	●	●	HYDROclean	●	●
Multi-function syringe handpiece	○	○	AQUAmat	●	●
PIEZOlux scaler	○	○	DEKAmat	●	●
Spray heating for instruments	●	●	Warm water heater	●	●
Anti-reflux for instruments	●	●	VACUstopp	●	●
Memodent multifunction display	●	●	Supply system		
HF electrosurgery	○	○	DVGW water block	●	●
ERGOcam 4	○	○	Additional device connection	○	○
LED polymerisation light	○	○	Disposal system		
Small X-ray viewer	○	○	External suction	●	●
Large X-ray viewer	○	○	Dürr amalgam separator	○	○
Physiological saline solution	○	○	METASYS AMALGAM SEPARATOR	○	○
Adjustable service table	●	-	Miscellaneous		
For two standard trays	○	○	Service table 1568	-	○
USB interface	○	○	KAVO OPERATING LIGHT 1410	○	○
Brake for arm system	●	-	Operating light mounting post	○	○
Holder for two standard trays	-	x	ERGOcom light	○	○
Holder for one standard tray	-	x	ERGOcom 4	○	○
			DEKASEPTOL BASIC SET	●	●

● Standard equipment ○ Optional equipment x must be selected - not deliverable



LED polymerisation light



KaVo PIEZOlux for calculus removal



PHYSIO 5007 work stool



KAVOLUX 1410 C Operating light



KaVo electrosurgery device



DIAGNOdent holder for the assistant element



ERGOcam 4 intraoral camera



Centro mounting system



Small X-ray viewer, 5 cm x 5 cm



Panoramic X-ray viewer: Positioned on the dentist element or service table



Child seat for optimally positioning children up to 1.5 m tall



External equipment connection: External equipment easily provided with water, air and electricity.



Double-jointed headrest, mechanically locked



Double-jointed headrest, pneumatically locked



Motorised headrest



Magnetic wedge attachment

Additional information can be obtained at: www.kavo.com





KaVo. Dental Excellence.